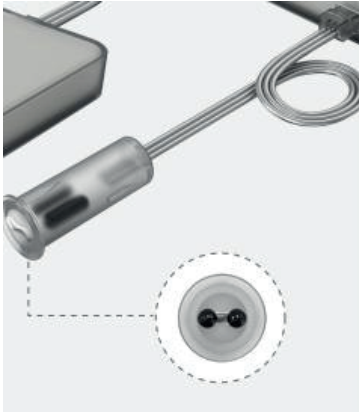
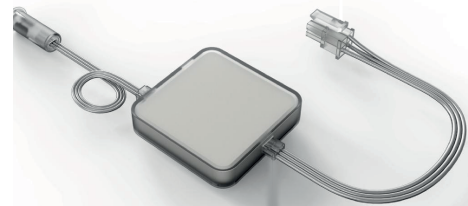


Solas soft IR dimmable On/Off sensor. Comes with a detachable control box. You can dim the lights by touching and holding, waving your hand, or opening and closing the cabinet to turn it On/Off.



Electromagnetic certification

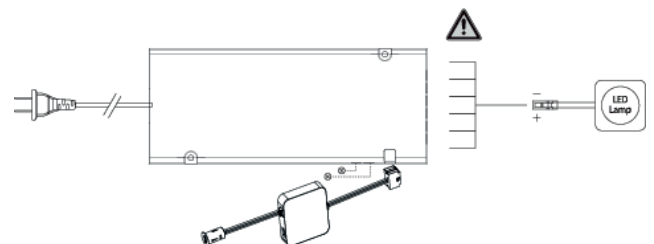
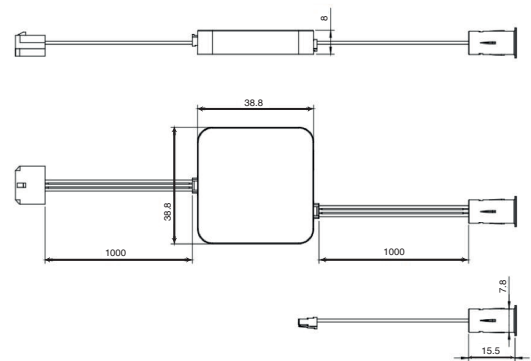
Item	Country	Certified status	Standards
CE	European Union	Accord	EN301 489



Description

Finish/colour:	Graphite
Input/Output voltage:	12/24 V _{DC}
Input/Output current:	5 mA
PWM frequency:	1 KHz
Sensor wire length:	1000 mm +/- 20 mm
Control box wire length:	1500 mm +/- 20 mm
Usage:	6-Way Switched Driver code BG-873.08.XX.04 required

NB: 1 control box with 2 sensors



Environmental conditions

Operating temperature range:	-10° C ~ +45° C
Storage temperature range:	-20° C ~ +70° C
Operating Humidity:	5 ~ 95%

Item ID No.

Item	Cat. No.
IR Dimmable On/Off Switch	BG-858.08.130

