

# BERGO DRAWER SET

## Tola Modular Drawer System

# BERGO®

### Smooth and Effortless

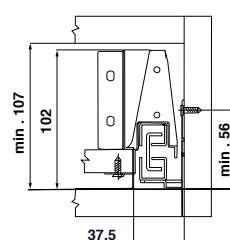
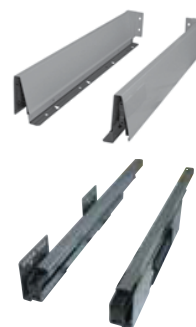
Totally practical, the Tola Drawer System offers an affordable solution coupled with silence, smooth running and ease of use. The synchronised opening action of this drawer is supremely comfortable.



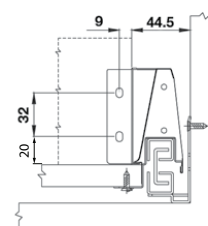
### Description

<b>Material:</b>	Steel
<b>Finish/Colour:</b>	Silver Metallic OR White
<b>Load capacity:</b>	Up to 35 kg
<b>Mechanism:</b>	Intergrated soft close with stabilisers
<b>Adjustment:</b>	Front: 2 dimensional, Horizontally $\pm 1$ mm Vertically $\pm 2$ mm
<b>Height:</b>	86 mm

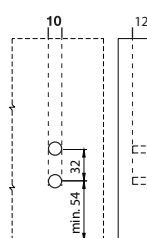
### Mounting without rail extension



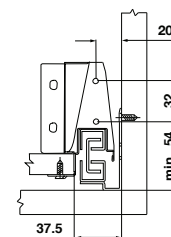
Cabinet drilling dimensions



Back drilling dimensions



Front drilling dimensions



Front drilling dimensions

### Item ID No.

	Finish	Length mm	Cat. No.
<b>Without rail extension</b>	White	500	<b>BG-500.03.020</b>
	Silver metallic	500	<b>BG-500.03.070</b>

### > Supplied with:

- One pair of drawer sides
- One pair of drawer runners
- One pair of front fixing brackets
- One pair of back panel brackets
- One pair of cover caps
- One pair of side rails (for rail extension drawers)

TDS-BG-510.03.070.v24.1