














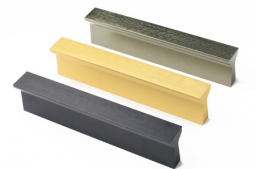
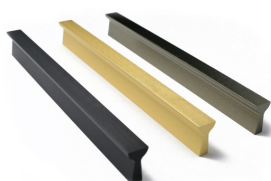



BERGO®

Handles Collection

|

2024.2

Page 06	M01		M02	
Page 07	M03		M04	
Page 08	M05		M06	
Page 09	M07		M08	

Page 10	M09		M10	
Page 11	M11		M12	
Page 12	M12		M12	
Page 13	M13		M14	

Page 14	M15	M16
Page 15	M17	M18
Page 16	M19	M20
Page 17	M21	M22

Page 18	M23	M24
Page 19	M25	M26
Page 20	M27	M28
Page 21	M29	

Page 14	M01		M02	
Page 15	M03		M04	
Page 16	M05		M06	

HANDLES

BERGO®

M01



Item ID	Finish	Material	Dimensions mm	Hole Spacing mm
BG-100.04.170	Black Matt	Zinc Alloy <small>(ZN, AL, MG, CU)</small>	137 x 9 x 28	128
BG-100.04.171	Black Matt	Zinc Alloy <small>(ZN, AL, MG, CU)</small>	232 x 9 x 28	224
BG-100.04.172	Black Matt	Zinc Alloy <small>(ZN, AL, MG, CU)</small>	328 x 9 x 28	320

M02



Item ID	Finish	Material	Dimensions mm	Hole Spacing mm
BG-101.04.170	Black Matt	Aluminum	148 x 12 x 20	128
BG-101.04.171	Black Matt	Aluminum	244 x 12 x 20	224
BG-101.04.172	Black Matt	Aluminum	340 x 12 x 20	320

HANDLES

BERGO®

M03



Item ID	Finish	Material	Dimensions mm	Hole Spacing mm
BG-102.04.100	Brushed Nickel	Zinc Alloy / Stainless Steel <small>(ZN, AL, MG, CU)</small>	138 x 14 x 36	128
BG-102.04.101	Brushed Nickel	Zinc Alloy / Stainless Steel <small>(ZN, AL, MG, CU)</small>	234 x 14 x 36	224
BG-102.04.102	Brushed Nickel	Zinc Alloy / Stainless Steel <small>(ZN, AL, MG, CU)</small>	330 x 14 x 36	320

M04



Item ID	Finish	Material	Dimensions mm	Hole Spacing mm
BG-103.04.100	Brushed Nickel	Aluminum	155 x 8.5 x 26	128
BG-103.04.101	Brushed Nickel	Aluminum	240 x 9 x 26	224

HANDLES

BERGO®

M05



Item ID	Finish	Material	Dimensions mm	Hole Spacing mm
BG-104.04.110	Brushed Brass	Zinc Alloy <small>(ZN, AL, MG, CU)</small>	151 x 8 x 27	128
BG-104.04.111	Brushed Brass	Zinc Alloy <small>(ZN, AL, MG, CU)</small>	272 x 8 x 27	224
BG-104.04.112	Brushed Brass	Zinc Alloy <small>(ZN, AL, MG, CU)</small>	353 x 8 x 27	320

M06



Item ID	Finish	Material	Dimensions mm	Hole Spacing mm
BG-105.04.180	Dark Bronze	Zinc Alloy <small>(ZN, AL, MG, CU)</small>	110 x 16 x 25	96
BG-105.04.181	Dark Bronze	Zinc Alloy <small>(ZN, AL, MG, CU)</small>	142 x 16 x 25	128

HANDLES

BERGO®

M07



Item ID	Finish	Material	Dimensions mm	Hole Spacing mm
BG-106.04.190	Aged Copper	Zinc Alloy <small>(ZN, AL, MG, CU)</small>	123 x 13 x 25	96
BG-106.04.191	Aged Copper	Zinc Alloy <small>(ZN, AL, MG, CU)</small>	219 x 13 x 25	192

M08



Item ID	Finish	Material	Dimensions mm	Hole Spacing mm
BG-107.04.110	Brushed Brass	Zinc Alloy <small>(ZN, AL, MG, CU)</small>	157 x 9 x 30	128
BG-107.04.111	Brushed Brass	Zinc Alloy <small>(ZN, AL, MG, CU)</small>	221 x 9 x 30	192
BG-107.04.112	Brushed Brass	Zinc Alloy <small>(ZN, AL, MG, CU)</small>	349 x 9 x 30	320

HANDLES

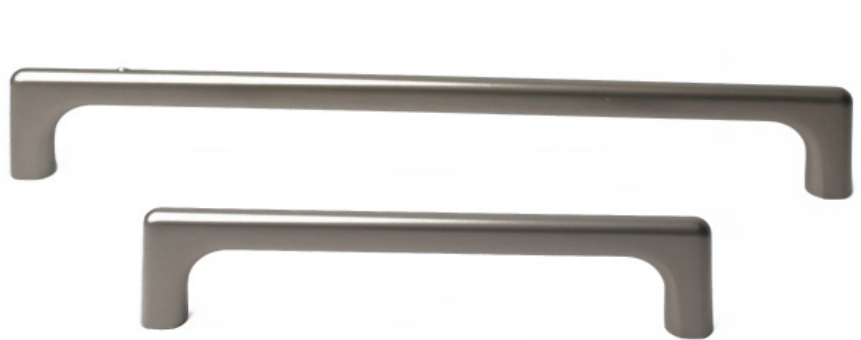
BERGO®

M09



Item ID	Finish	Material	Dimensions mm	Hole Spacing mm
BG-108.04.110	Brushed Brass	Zinc Alloy (ZN, AL, MG, CU)	117 x 16 x 25	96
BG-108.04.111	Brushed Brass	Zinc Alloy (ZN, AL, MG, CU)	149 x 16 x 25	128
BG-108.04.112	Brushed Brass	Zinc Alloy (ZN, AL, MG, CU)	213 x 16 x 25	192

M10

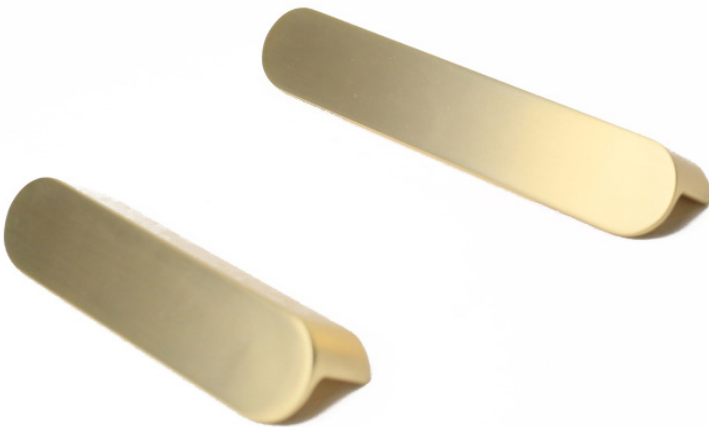


Item ID	Finish	Material	Dimensions mm	Hole Spacing mm
BG-109.04.200	Graphite Matt	Zinc Alloy (ZN, AL, MG, CU)	139 x 7 x 31	128
BG-109.04.201	Graphite Matt	Zinc Alloy (ZN, AL, MG, CU)	237 x 8 x 32	224

HANDLES

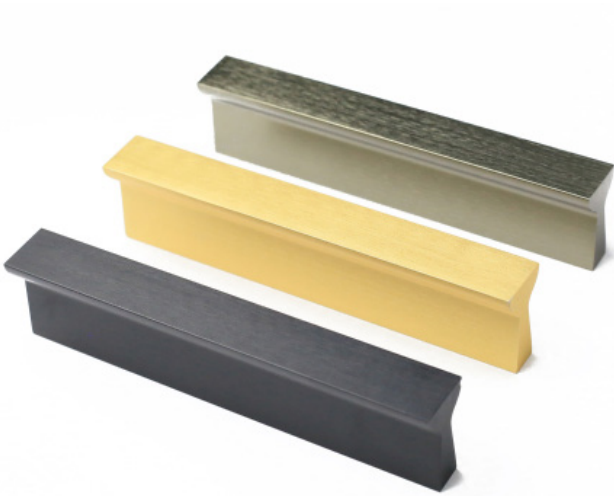
BERGO®

M11



Item ID	Finish	Material	Dimensions mm	Hole Spacing mm
BG-110.04.110	Brushed Brass	Zinc Alloy (ZN, AL, MG, CU)	110 x 25 x 20	96
BG-110.04.111	Brushed Brass	Zinc Alloy (ZN, AL, MG, CU)	142 x 25 x 20	128

M12

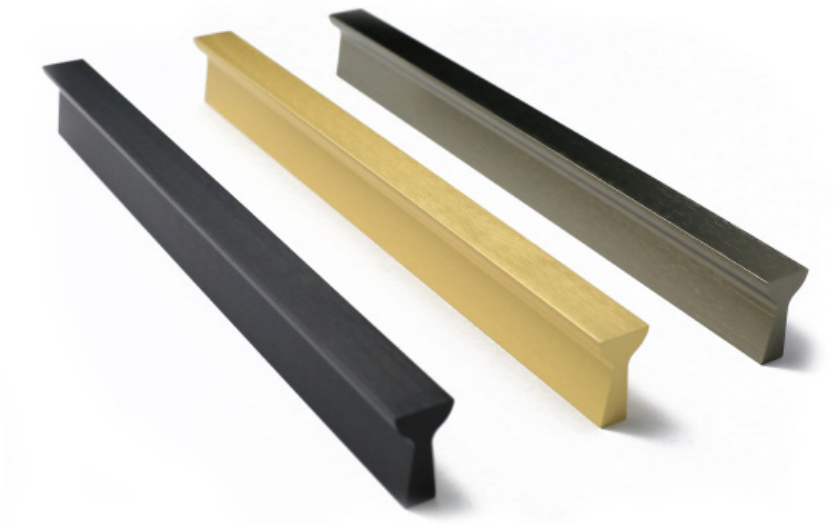


Item ID	Finish	Material	Dimensions mm	Hole Spacing mm
BG-111.04.100	Brushed Nickel	Aluminum	150 x 19.5 x 34	96
BG-111.04.210	Brushed Black	Aluminum	150 x 19.5 x 34	96
BG-111.04.110	Brushed Brass	Aluminum	150 x 19.5 x 34	96

HANDLES

BERGO®

M12



Item ID	Finish	Material	Dimensions mm	Hole Spacing mm
BG-111.04.101	Brushed Nickel	Aluminum	300 x 19.5 x 34	256
BG-111.04.211	Brushed Black	Aluminum	300 x 19.5 x 34	256
BG-111.04.111	Brushed Brass	Aluminum	300 x 19.5 x 34	256

M12



Item ID	Finish	Material	Dimensions mm	Hole Spacing mm
BG-111.04.102	Brushed Nickel	Aluminum	1,000 x 19.5 x 34	900
BG-111.04.212	Brushed Black	Aluminum	1,000 x 19.5 x 34	900
BG-111.04.112	Brushed Brass	Aluminum	1,000 x 19.5 x 34	900

HANDLES

BERGO®

M13



Item ID	Finish	Material	Dimensions mm	Hole Spacing mm
BG-118.04.090	Copper	Zinc Alloy / Aluminum <small>(ZN, AL, MG, CU)</small>	210 x 13 x 34	192

M14



Item ID	Finish	Material	Dimensions mm	Hole Spacing mm
BG-119.04.110	Brushed Brass	Aluminum	120 x 12 x 35	80
BG-119.04.111	Brushed Brass	Aluminum	200 x 20 x 35	160

M15



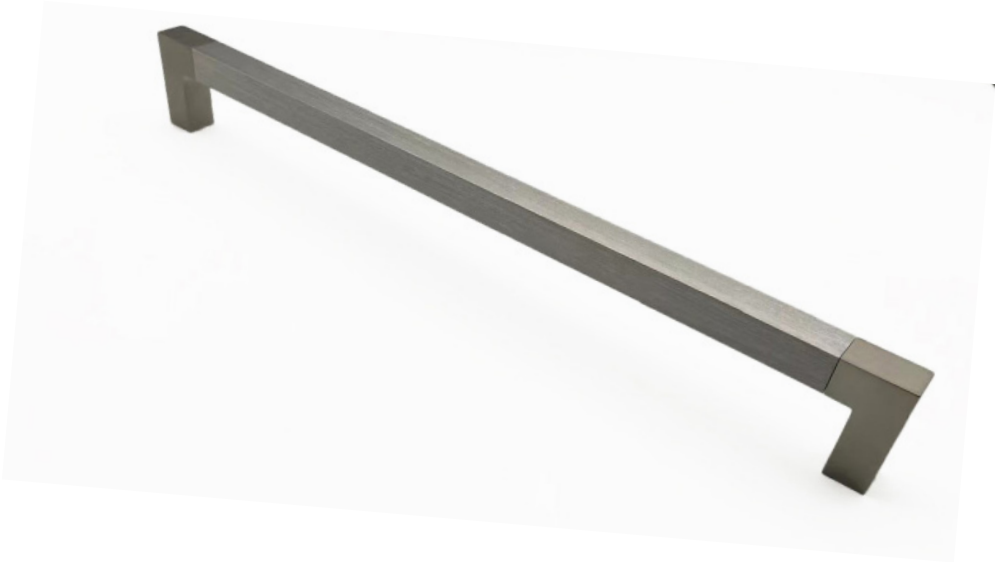
Item ID	Finish	Material	Dimensions mm	Hole Spacing mm
BG-120.04.170	Black Matt	Aluminum	190 x 39.5 x 18.6	160

M16



Item ID	Finish	Material	Dimensions mm	Hole Spacing mm
BG-121.04.170	Black Matt	Zinc Alloy (ZN, AL, MG, CU)	202 x 52 x 15	192
BG-121.04.200	Graphite Matt	Zinc Alloy (ZN, AL, MG, CU)	202 x 52 x 15	192

M17



Item ID	Finish	Material	Dimensions mm	Hole Spacing mm
BG-122.04.310	Brushed Aluminum	Zinc Alloy / Aluminum (ZN, AL, MG, CU)	400 x 14 x 42	386

M18



Item ID	Finish	Material	Dimensions mm	Hole Spacing mm
BG-123.04.100	Brushed Nickel	Zinc Alloy (ZN, AL, MG, CU)	340 x 18.8 x 31	288

HANDLES

BERGO®

M19



Item ID	Finish	Material	Dimensions mm	Hole Spacing mm
BG-124.04.170	Black Matt	Zinc Alloy <small>(ZN, AL, MG, CU)</small>	141 x 12 x 29	128
BG-124.04.171	Black Matt	Zinc Alloy <small>(ZN, AL, MG, CU)</small>	205 x 12 x 29	192

M20



Item ID	Finish	Material	Dimensions mm	Hole Spacing mm
BG-125.04.330	Brushed Black Copper	Aluminum	340 x 12 x 30	320

HANDLES

BERGO®

M21



Item ID	Finish	Material	Dimensions mm	Hole Spacing mm
BG-126.04.300	Brass	Zinc Alloy <small>(ZN, AL, MG, CU)</small>	140 x 10 x 30	96
BG-126.04.301	Brass	Zinc Alloy <small>(ZN, AL, MG, CU)</small>	172 x 10 x 30	128
BG-126.04.170	Black Matt	Zinc Alloy <small>(ZN, AL, MG, CU)</small>	140 x 10 x 30	96
BG-126.04.171	Black Matt	Zinc Alloy <small>(ZN, AL, MG, CU)</small>	172 x 10 x 30	128

M22



Item ID	Finish	Material	Dimensions mm	Hole Spacing mm
BG-127.04.320	Nickel Matt	Zinc Alloy <small>(ZN, AL, MG, CU)</small>	135 x 8 x 31	96
BG-127.04.321	Nickel Matt	Zinc Alloy <small>(ZN, AL, MG, CU)</small>	199 x 8 x 31	160
BG-127.04.200	Graphite Matt	Zinc Alloy <small>(ZN, AL, MG, CU)</small>	135 x 8 x 31	96
BG-127.04.201	Graphite Matt	Zinc Alloy <small>(ZN, AL, MG, CU)</small>	199 x 8 x 31	160

M23



Item ID	Finish	Material	Dimensions mm	Hole Spacing mm
BG-128.04.340	Antique Black Copper	Zinc Alloy <small>(ZN, AL, MG, CU)</small>	195 x 12 x 33	152

M24



Item ID	Finish	Material	Dimensions mm	Hole Spacing mm
BG-129.04.170	Black Matt	Aluminum	160 x 14 x 35	128

M25



Item ID	Finish	Material	Dimensions mm	Hole Spacing mm
BG-130.04.170	Black Matt	Aluminum	600 x 10.5 x 25	512
BG-130.04.171	Black Matt	Aluminum	1000 x 10.5 x 25	960

M26



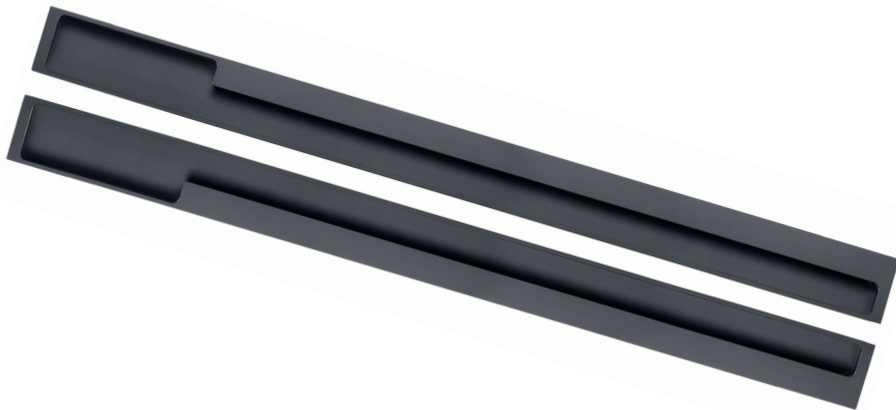
Item ID	Finish	Material	Dimensions mm	Hole Spacing mm
BG-131.04.170	Black Matt	Aluminum	400 x 12 x 24	288

M27



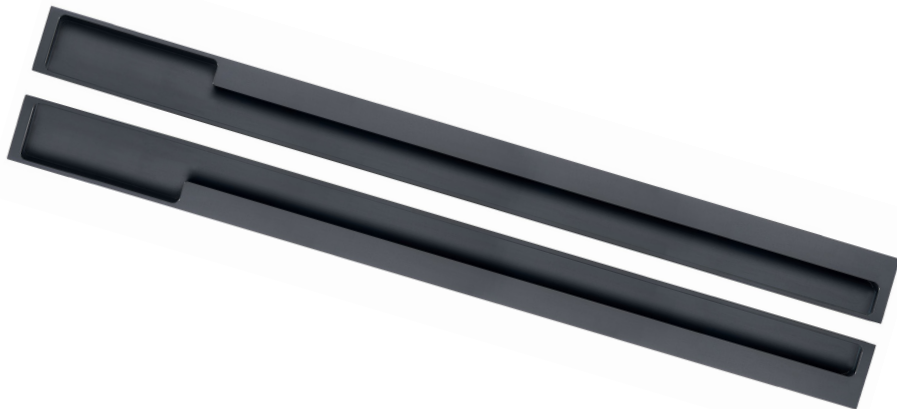
Item ID	Finish	Material	Dimensions mm	Hole Spacing mm
BG-132.04.170	Black Matt	Aluminum	600 x 9.5 x 27.5	512

M28



Item ID	Finish	Material	Dimensions mm	Hole Spacing mm
BG-133.04.170	Black Matt	Aluminum	1000 x 50 x 15	988

M29



Item ID	Finish	Material	Dimensions mm	Hole Spacing mm
BG-134.04.170	Black Matt	Aluminum	1000 x 50 x 15	988

M01



Item ID	Finish	Material	Dimensions mm	Hole Spacing mm
BG-112.04.190	Aged Copper	Zinc Alloy <small>(ZN, AL, MG, CU)</small>	54 x 23 x 25	Single Hole

M02



Item ID	Finish	Material	Dimensions mm	Hole Spacing mm
BG-113.04.220	Aged Bronze	Zinc Alloy <small>(ZN, AL, MG, CU)</small>	44 x 22 x 24	Single Hole

M03



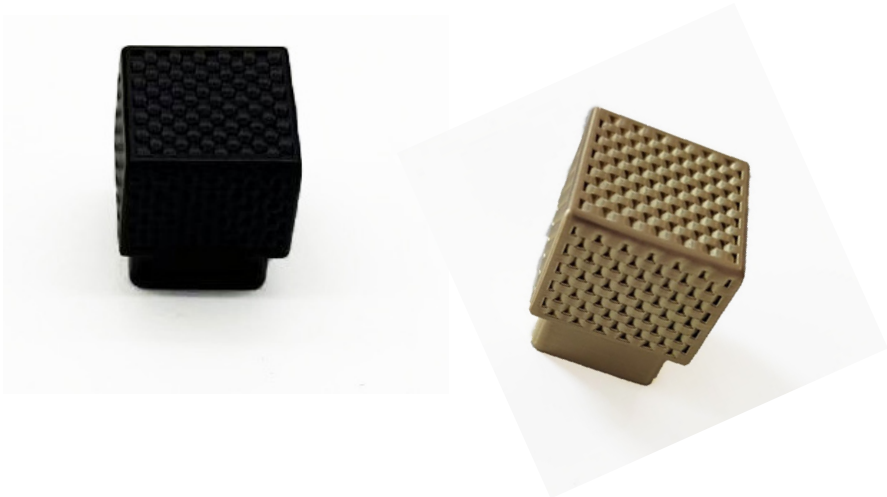
Item ID	Finish	Material	Dimensions mm	Hole Spacing mm
BG-114.04.170	Black Matt	Aluminum	30 x 29	Single Hole
BG-114.04.350	Nickel	Aluminum	30 x 29	Single Hole

M04



Item ID	Finish	Material	Dimensions mm	Hole Spacing mm
BG-115.04.170	Black Matt	Aluminum	55 x 14 x 37	Single Hole

M05



Item ID	Finish	Material	Dimensions mm	Hole Spacing mm
BG-116.04.300	Brass	Zinc Alloy <small>(ZN, AL, MG, CU)</small>	22 x 26	Single Hole
BG-116.04.040	Black Matt	Zinc Alloy <small>(ZN, AL, MG, CU)</small>	22 x 26	Single Hole

M06



Item ID	Finish	Material	Dimensions mm	Hole Spacing mm
BG-117.04.200	Graphite Matt	Zinc Alloy <small>(ZN, AL, MG, CU)</small>	20 x 28	Single Hole

1.0 Warranty purpose

BERGO warrants to the original purchaser (non-transferable), for a period of 20 years in residential use and 10 years in commercial or professional use, BERGO handles and knobs against all manufacturing defects apparent prior to installation or which would cause abnormal degradation of the product under normal conditions of installation and use, from the date of purchase shown on the invoice.

2.0 BERGO Limited Warranty Conditions

2.1 BERGO products must be “first choice” products purchased through the official BERGO dealer network and delivered in their original packaging.

2.2 The handles/knobs must be installed in accordance with the installation instructions provided by BERGO and in accordance with applicable professional standards.

2.3 The product's destination must be compatible with its normal use as described by BERGO in its commercial and technical documentation.

2.4 An appropriate maintenance program must be in place for the entire duration of the warranty.

3.0 Warranty Exclusions

The warranty does not apply to:

3.1 “Second choice” products that have been downgraded and sold as is.

3.2 Modified handles/knobs in any way.

3.3 Any product having a defect due to use of paints, solvents, or other chemicals.

3.4 Any product that is used in combination with knobs, levers, or trim of other than those manufactured by BERGO.

3.5 Damage caused by failure to comply with site conditions: storage and supply, nature of the support, planimetry, hygrometry, temperatures, and temperature/humidity variations at the time of installation, and during use of the product.

3.6 Damage caused during the installation.

3.7 Damage such as scratches, heavy wear and tear, especially caused by hand jewellery, operating the handles with abrasive/acidic material on hands/gloves.

3.8 Excessive wear and tear and scratches caused by sand, grit, abrasive or acidic material that comes into contact with handles.

3.9 Damage caused by sharp, cutting, puncturing, blunt or perforating material.

3.10 Damage caused by improper cleaning methods, or the use of detergents not compatible with the product, chemical pollution, stains, grease or food.

3.11 Damage caused by special weather conditions or natural disasters, explosion or fire.

3.12 Discoloration due to improper cleaning/maintenance.

3.13 The alteration of the gloss is not considered as an abnormal wear of the product.

4.0 BERGO warranty conditions

4.1 Before installing BERGO products, any item with a defect can be exchanged free of charge with the distributor where the purchase was made.

4.2 If a defect is found during the warranty period, the problem will only be dealt with after validation of the claim by BERGO, which will have the choice to proceed on its own initiative in the following ways:

- Either supply a quantity of product corresponding to the defective quantity free of charge to the buyer (if the defective product is no longer in production, an equivalent product in the range will be supplied)

- Or offer an amount corresponding to the purchase value of the defective product quantity from BERGO as a lump sum compensation, calculated proportionally considering the duration of use of the product in relation to the total warranty period.

4.3 The purchaser must inform BERGO in writing, describing the nature of the problem (with photos) and enclosing proof of purchase (invoice)

5.0 Limitations of the warranty

5.1 The warranty does not cover:

- Damage caused by third parties (transport, handling, storage, installation ...)

- Costs incurred for product replacement, and other charges such as shipping are not included in the warranty.

- Costs incurred by interference with other products in connection with BERGO products related to disassembly or installation of the products.

5.2 A claim does not result in an extension of the warranty period.

5.3 BERGO is not liable for any direct or indirect damage, loss or loss of profit caused by defects covered by the warranty.

5.4 Under no circumstances shall BERGO's liability under the warranty exceed the amount paid by the dealer to BERGO for the purchase of the product concerned.

5.5 These warranties are not transferable. Therefore, no transferee is covered by these warranties.

